



What's On in the Christmas Holidays 2024?

In this update, we give you news of some of the events and activities for children and young people with SEND, which will be taking place over the holidays in (or close) to the Enfield area as well as some days out in London and nearby.



We have included a link to the Local Authority’s booklet on playschemes and some activities and days out. Some of these are specifically aimed at children and young people with additional needs and others are more general but may be suitable for some. Please do check individual websites and talk to the venues/organisers if you are not sure whether something may be suitable.

Whilst every effort has been made to ensure that this information is accurate, we would recommend that you check with individual venues and providers in advance of any visit. Our website also includes some [activities to keep your child entertained at home](#) which may be useful.

We will update this guide with any other relevant information, so if you do hear of something that you think would be useful for other families, do let us know (contact details are at the end of this update).

Contents

'Local Offer' information	2
General Guidance	2
Playschemes and other activities.....	2
Ice skating	3
Wheelchair accessible ice-skating at Somerset House	3
Chilled out skating sessions at Somerset House.....	3
Accessible table tennis for all	3
Theatre and Cinema	4
Relaxed performances of Christmas show in Highgate.....	4
The Fir Tree – relaxed show in Finchley.....	4
Chickenshed	4
Accessible Cinema.....	5
SEN Arts and Sports Club for ages 8 - 16.....	6

'Local Offer' information

The Local Offer is the Local Authority website bringing together information about all aspects of provision for children with Special Educational Needs and Disabilities (SEND). It contains a section on [activities and things to do](#) and information about ['Short Breaks'](#)

More information is in the attached [Enfield Children and Young Person's Service Guide for parents and carers](#) on local free and affordable activities. There is also information about [accessible toilets and changing facilities](#).

General Guidance

Visiting a new venue can be a daunting experience if you have children with either physical disabilities or sensory impairments. From issues around wheelchair access and accessible toilets to combating your child's anxieties over an unfamiliar environment, the relevant information isn't always easy to find. The [AccessAble](#) website gives detailed (and free) information about the accessibility of thousands of venues in the UK - including more than 200 in the Borough of Enfield. The information is available in easy-read format (often useful if you want to look at it with your child/young person) as well as a variety of different languages. Please do note however that some information may have changed as a result of the pandemic, so do check directly with the venue as appropriate. You may also find these guides useful:

- London attractions: [Accessible attractions - London Attraction - visitlondon.com](#)
- Rough Guide to Accessible Britain <https://www.motability.co.uk/news/rough-guide-to-accessible-britain/>
- Accessible days out Disability Horizons [10 accessible days out across the UK for disabled people \(disabilityhorizons.com\)](#)

Playschemes and other activities

The Local Authority publishes a booklet setting out playschemes and activities for the school holidays. The latest version of this is on the Local Offer [here](#) (entitled Holiday Play and Leisure Activities booklet) along with additional information about playschemes and after-school clubs.

This includes specialist playschemes (including ALWA, Centre 404 VIP and Cheviots), inclusive playschemes like Endorphins, and other activities. You can see presentations from some of these providers on our website [here](#) as well as an overview from the Joint Service for Disabled Children, who manage ['Short Breaks'](#) in Enfield.

Please note there is limited availability over the Christmas period.



Holiday Play and Leisure Activities for Children and Young People with SEND

Christmas 2024



www.enfield.gov.uk



Ice skating

Skating sessions at Somerset House this Christmas include wheelchair-exclusive sessions and ‘chilled out’ sessions for those who need a quieter environment.

Wheelchair accessible ice-skating at Somerset House

All information about wheelchair-accessible skating [here](#)
 Wheelchair users can skate in all public sessions using a wheelchair subject to availability. Wheelchair users are entitled to one free PA Companion Skate ticket (bookable over the phone) as well as on-ice support from the Ice Marshalls. You are asked to give at least 2 weeks’ notice if possible, to ensure sufficient staffing. Additionally, there will be a dedicated wheelchair session on Sunday 5th January at 3 pm, for wheelchair users and their companions only. There will also be a Changing Places toilet and changing facility available (as well as standard accessible toilets).



Chilled out skating sessions at Somerset House

For those who would prefer to skate in a more relaxed setting, Somerset House are offering a few reduced-capacity skate sessions. During these sessions, there will be music at lower levels, and an extra indoor area as a chill-out area for anyone who needs a break.

During the school holidays, these will be from 10 am to 10.45 am Saturday 4th Jan and Thursday 9th January 11 to 11.45 am.

Details, social story and booking links [here](#).

Accessible table tennis for all

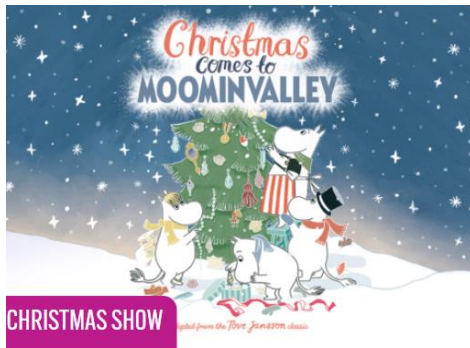
In addition to the dates listed on the flyer, there will be an additional session of accessible table tennis on 22nd December. Please get in touch directly with Muz, who is the organiser, at muz@pingisking.com if you are interested in this or any future sessions.

Accessible table tennis session for all. Wheelchairs welcome.		
1 hour sessions at 3.15pm - 19 th Jan 2025 - 16 th Feb 2025 - 16 th Mar 2025 - 13 th Apr 2025	Make new friends playing table tennis. Bats & balls provided but bring your own if you prefer.	We plan to continue throughout 2025 as long there are at least 3 attendees at each session
Discretionary donations of £5 welcome. Free parking available. Please register vehicle on day.		Suitable for people of all ages with Down Syndrome or Cerebral Palsy.
Please bring indoor trainers and water. A bar is available for snacks, drinks, tea and coffee.	Session led by qualified coach, Muz Janoowalla. First 4 to register get a 10 minute private lesson.	Held and sponsored by Barnet Table Tennis Centre, Barnet Lane, Barnet, EN5 2DN
To come along please register in advance with Muz via muz@pingisking.com		

Theatre and Cinema

Relaxed performances of Christmas show in Highgate

Although there are no relaxed performances available at our local pantomimes (at Millfield Theatre, Edmonton and Wylotts in Potters Bar), [Jacksons Lane](#) at Highgate is providing three relaxed performances of their Christmas show 'Christmas Comes to Moomin Valley' during the school holidays.



CHRISTMAS COMES TO MOOMINVALLEY

These shows provide an inclusive and relaxed space for all to enjoy live theatre, and everyone is welcome to attend, regardless of whether they feel they need the additional support that these shows offer or not.

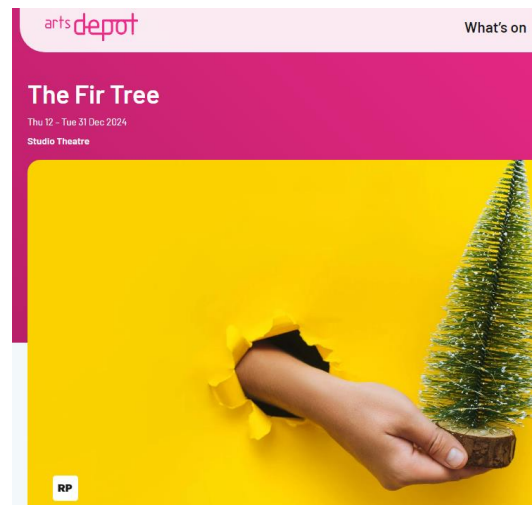
Visual story guides and sensory touch tours are also available in addition to relaxed performance adjustments (such as lower volume, lights remaining on, breakout spaces and a relaxed attitude towards audience noise and movement during the show)

There are relaxed performances on **Friday 20th December at 5 pm (limited tickets available), Monday 30th December at 11 am and Saturday 4th January at 11am**. Booking and more information [here](#).

The Fir Tree – relaxed show in Finchley

The Artsdepot in North Finchley have a new festive show called The Fir Tree.

The show is full of music and song, puppetry, and has also been made with neurodiverse audiences in mind. All performances are Sensory Adapted which means that the environment is relaxed (audiences can move around, make noise, leave the auditorium etc) and the show itself has been created with no sudden sound effects or lighting changes. There will also be a visual story available in advance and a chill out space on the day.



More information is available on the website [here](#) or call the Box Office at 020 8369 5454

Chickenshed

Chickenshed is an Inclusive theatre company with a strong focus on supporting individuals with SEND. For details of all their current events and activities see the Chickenshed events page [here](#).



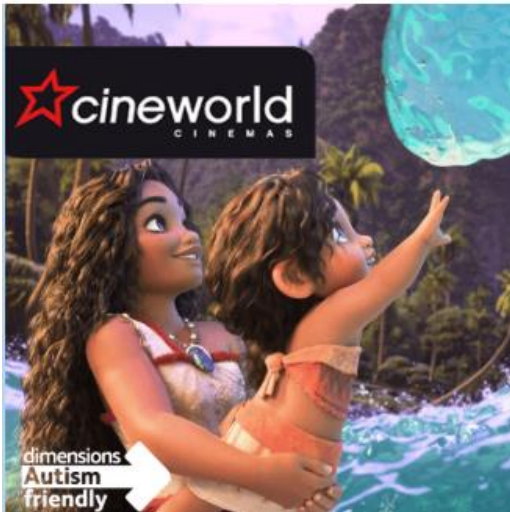
Venue: **Chickenshed**, Chase Side, Southgate, N14 4PE, UK

During the Christmas holidays, they will be showing 'Christmas Tales' from 18th to 30th December a 50-60 minute show aimed at age 7 and under

Accessible Cinema

Use your CEA card when visiting the cinema with a disabled child, to get a free ticket for an accompanying adult – see [here](#) for information.

To find audio-described or subtitled showings of films at Cineworld Enfield, click [here](#), scroll down under 'Choose a screening' and select either audio-described or subtitled.



Over the Christmas Holidays, there will be an Autism friendly showing of Moana 2 at Cineworld Enfield on Saturday 4th January at 11 am. You'll be able to book tickets [here](#) (select the correct date and the showing will appear).

Vue cinema in Wood Green will have a relaxed showing of 'Paddington in Peru' on Sunday 29th December 10.30 am. More information on their accessible and autism friendly showings [here](#) (scroll down to the bottom of the page) and book [here](#).



SEN Arts and Sports Club for ages 8 - 16

These free Arts and Sports Workshops are held in conjunction with Enfield Council and are specifically designed to provide a safe, inclusive, and fun environment for children with SEND to explore their creativity, make new friends, and build confidence.

Workshop Highlights:

- **Who:** Tailored for children with SEND aged 8-16
- **What:** Festive-themed arts and sports activities including T shirt decorating and Football, led by experienced instructors with SEND training
- **When:** 2nd - 5th January 2025
- **Where:** Bell Lane Youth Centre, Bell Lane, EN3 5AP
- **Cost:** Free

These workshops are a wonderful opportunity for children to socialise, express themselves, and have fun in a supportive setting. See flyer for more details.

If you have any questions please contact Sadia at support@curlyriot.co.uk or 07882 019311.

FREE
Arts & Sports Club
FOR KIDS WITH SPECIAL EDUCATIONAL NEEDS
AGES 8 - 16

2-5th
JANUARY
2025
10am - 2pm
BELL LANE
YOUTH CENTRE,
BELL LN, ENFIELD
EN3 5PA

BOOK NOW at support@curlyriot.co.uk or scan the QR code ↓



Department for Education

ENFIELD Council

We hope that you have found this update useful. If you have any feedback, or anything that you think we could be telling our families about, please let us know. Our contact details are:

Telephone [07516 662315](tel:07516662315) Email: info@ourvoiceneenfield.org.uk

Website: www.ourvoiceneenfield.org.uk

You can also follow us on our Facebook page at <https://www.facebook.com/ourvoiceneenfield/> on [Twitter@EnfieldOurVoice](https://twitter.com/EnfieldOurVoice) and on Instagram at <https://www.instagram.com/ourvoiceneenfield/>

If you no longer wish to receive these emails, and/or would like us to remove your details from our database, please email us and we will remove your details from our mailing list and/or database

