

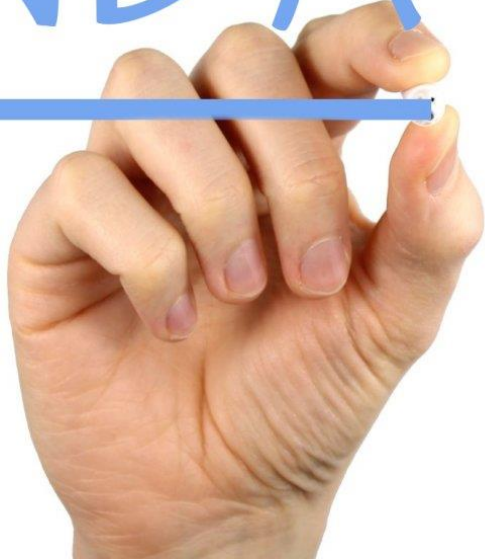
The GP Learning Disability Register and Annual Health Checks

Fazilla Amide – Our Voice

Sarah Pope, Clinical Lead Enfield's Integrated Learning Disability Service

13th March 2024

AGENDA



- GP Learning Disability Register
- Annual Health Checks
- Reasonable Adjustments
- Hospital Passports
- Time for Questions

GP Learning Disability Register



MemorialCare
Medical Group

Patient Registration

First Name	Last Name
Address	City
Please check Primary phone	Home Phone <input type="checkbox"/>
Other Name(s) Used	Work Phone <input type="checkbox"/>
Gender <input type="checkbox"/> M <input type="checkbox"/> F <input type="checkbox"/> Nonbinary	E-mail Address <input type="checkbox"/>
Marital Status <input type="checkbox"/> Married <input type="checkbox"/> Single	Preferred Language
Preferred Contact <input type="checkbox"/> Mail <input type="checkbox"/> Home Phone <input type="checkbox"/> Day Phone <input type="checkbox"/> Cell Phone	Ethnicity <input type="checkbox"/> Cambodian <input type="checkbox"/> Filipino <input type="checkbox"/> Hispanic/Latino <input type="checkbox"/> Non-Hispanic

What is a Learning Disability?

A learning disability affects the way a person learns new things throughout their life.

- A learning disability is different for everyone. No two people are the same
- A person with a learning disability might have some challenge:
 - understanding complicated information
 - learning some skills
 - looking after themselves or living alone

[Learning disabilities - NHS \(www.nhs.uk\)](http://www.nhs.uk)

Learning Disability v Learning Difficulty

Learning Disability:

“a reduced intellectual ability and difficulty with everyday activities”

- NOT interchangeable with Learning Difficulty such as dyslexia, dyspraxia and dyscalculia
- [Learning difficulties | Mencap](#)
- Currently someone who is autistic but with no learning disability is not eligible for an Annual Health Check, however, there are pilots being conducted and are being evaluated

What is the GP Learning Disability Register?

- The Learning Disability Register is for babies, children, young people and adults who have a learning disability and are registered at their local GP practice
- The Register lets staff at the GP practice know that a person has a learning disability and that the person may need reasonable adjustments
- Your child doesn't need a formal diagnosis. The GP can add someone to the Register if they feel in discussion with yourself, that your child would benefit from being on this – see appendix 4 at the end of this document
- <https://www.england.nhs.uk/wp-content/uploads/2019/10/improving-identification-of-people-with-a-learning-disability-guidance-for-general-practice.pdf>

What are the benefits of being on the Register?

Your child will be able to get:

- An Annual Health Check from the age of 14 and older
- A Health Action Plan (HAP) – do ask for a copy *
- Free NHS vaccinations, such as Flu, COVID-19, MMR etc.
- If you are their main carer, you can also have yourself registered as a carer
- Enfield's HAP <https://www.england.nhs.uk/wp-content/uploads/2019/10/improving-identification-of-people-with-a-learning-disability-guidance-for-general-practice.pdf>

Annual Health Checks



[This Photo](#) by Unknown Author is licensed under [CC BY](#)

Annual Health Checks

- People with a Learning Disability are entitled to an Annual Health Check from 14 years +
- Covers a review of overall health:
 - ✓ Review of medications if they are taking any
 - ✓ Weight and height check
 - ✓ Blood pressure check
 - ✓ General health
 - ✓ Provide you with their Health Action Plan
- <https://www.youtube.com/watch?v=gHGGZmNWcdE>

Annual Health Checks - NCL

As of **January 2024**, annual health checks for patients with **learning disabilities** in North Central London are at **58%**.

Target: **75%** (on track to achieve this)

Last Year's Performance: **90%**



Factors Contributing to Performance

Change in GP practice **codes NHS England** introduced a new code to confirm AHC completion. **Variation** in quality of patient contact across the **system** previous year **uptake of 90%** may not be true reflection.

Age Group

Low **performance** in health checks observed in the

14-18 age group

Whole System Approach

Involve both **health** and **social care** sectors to encourage **uptake**. Send reminders **twice yearly** to reduce surge in **Q4**

Further Interventions

Consider **outreach programs** targeting specific demographics

Enhance accessibility of health check appointments

Having an Annual Health Check & Health Action Plan



[Harshi's learning disability annual health check and health action plan \(youtube.com\)](https://www.youtube.com/watch?v=...)

- What a good Annual Health Check should be like

Annual Health Checks – useful links

- [NHS England » Annual health checks](#)
- https://www.mencap.org.uk/sites/default/files/2016-06/Annual_health_checks_Easy_Read_1.pdf
- <https://www.learningdisabilityservice-leeds.nhs.uk/wp-content/uploads/2020/07/Inclusion-tool-Jan-2019-3.pdf>
- [Learning Disability GP Annual Health Checks for over 14s – YouTube](#)
- [A guide to Annual Health Checks for people with learning disabilities – YouTube](#)
- [Introduction to Annual Health Checks for people with a Learning Disability – YouTube](#)
- https://www.youtube.com/watch?v=C8R_bJdLSQ

What is your feedback and thoughts regarding what you have just heard?

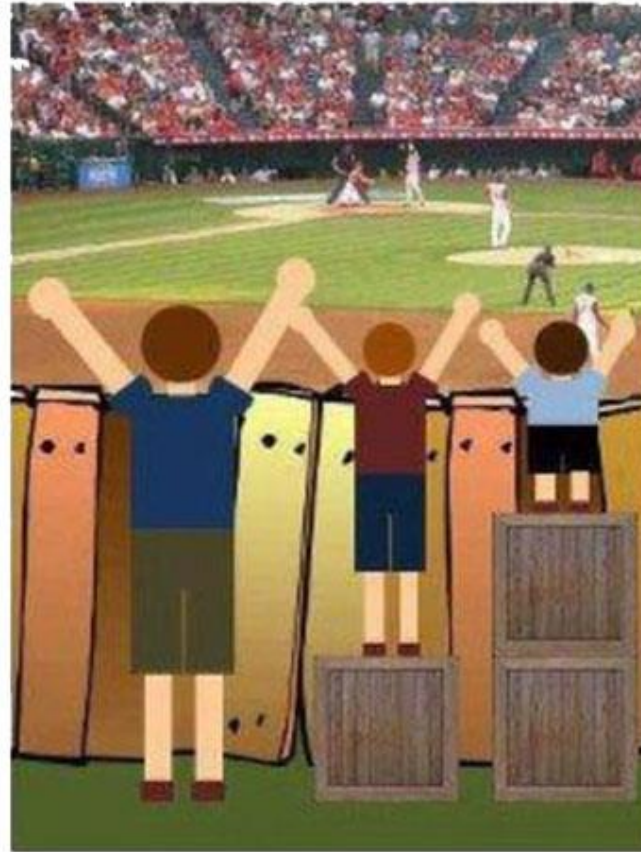


Reasonable Adjustments – Equity v Equality

Equality is not always Justice



This is EQUALITY



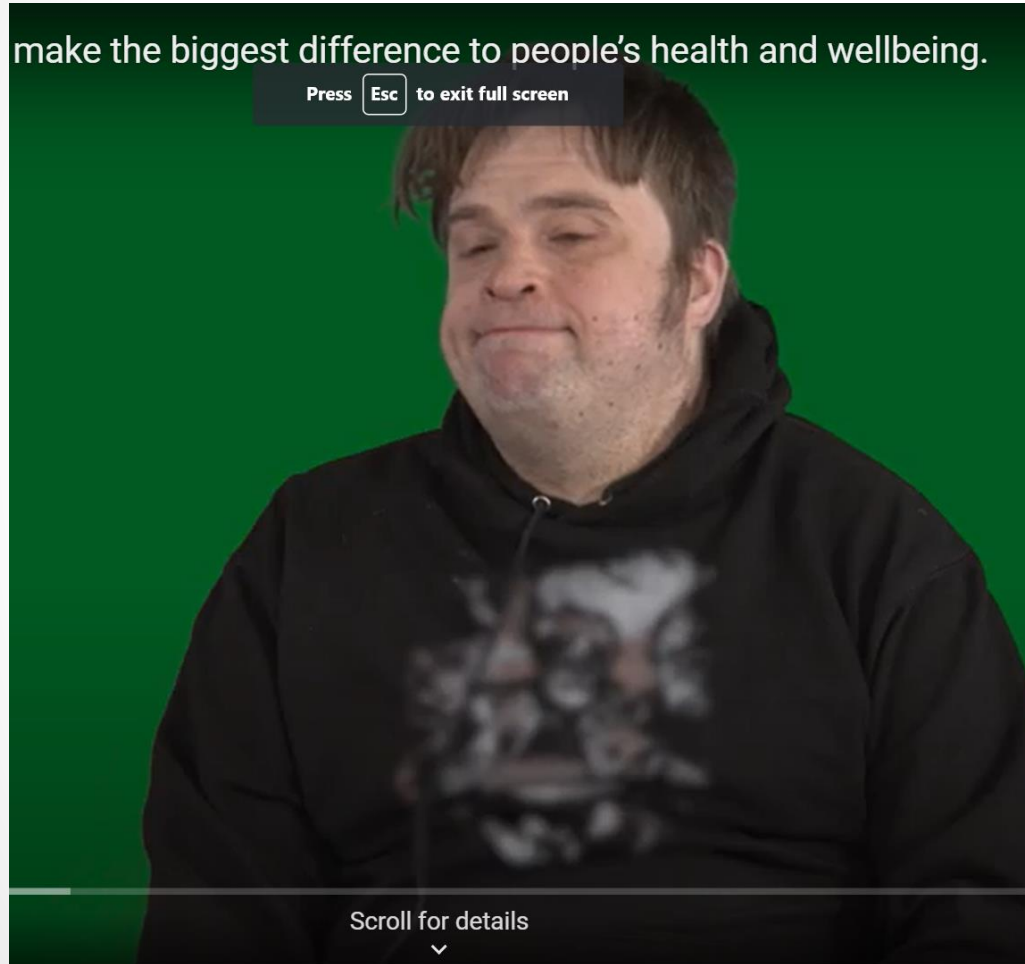
This is JUSTICE

Reasonable Adjustments – You tube



[Use of reasonable adjustments to reduce health inequalities for people with a learning disability \(youtube.com\)](https://www.youtube.com/watch?v=...)

Reasonable Adjustments Video



Misfits

- Reasonable adjustments make the biggest difference to people's health and wellbeing. – YouTube

Reasonable Adjustments

- When going to appointments, do ask to have any reasonable adjustments recorded, e.g. the following are potential reasonable adjustments:
 - ✓ quieter times or somewhere quieter to wait
 - ✓ double appointments
 - ✓ having information in easy read
 - ✓ having a parent or carer attend

Not all settings will be able to meet those reasonable needs, e.g. may not have a separate quiet waiting area, but they may offer an appointment first thing before it gets busy, or allow you to wait outside

Hospital Passports

When going into hospital, it is important that staff know how to support your child, e.g. how they:

- communicate
- normally present when well
- present when they are feeling ill or distressed
- can be calmed and re-assured
- What reasonable adjustments are needed

You can complete and print off a standard hospital passport

You can speak to the hospital Learning Disability Liaison Nurse who can help you

Hospital Passports


This is my **NHS** Hospital Passport

For people with learning disabilities coming into hospital

My name is:

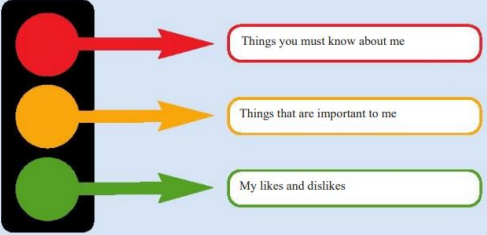
If I have to go to hospital this book needs to go with me, it gives hospital staff important information about me.

It needs to hang on the end of my bed and a copy should be put in my notes.



This passport belongs to me. Please return it when I am discharged.

Nursing and medical staff please look at my passport before you do any interventions with me.



Things you must know about me

Things that are important to me

My likes and dislikes

Mental Capacity Act 2005

If I am assessed as lacking the capacity to consent to my treatment the following people must be involved in best interest's decision making

Name	Relationship	Contact Details
Name	Relationship	Contact Details
Name	Relationship	Contact Details
Name	Relationship	Contact Details

[Learning disabilities - Support if you are going into hospital - NHS \(www.nhs.uk\)](http://www.nhs.uk)

[This is my \(enfield.gov.uk\)](http://enfield.gov.uk)

More useful links

- <https://mylife.enfield.gov.uk/enfield-home-page/content/learning-disabilities/my-health/my-health/> - useful information about general health for people with a learning disability on Enfield's LA website
- https://www.youtube.com/watch?v=R9qvFI_khMs – about reasonable adjustments from the Down Syndrome Association

What is your feedback and thoughts regarding what you have just heard?



SUMMARY



- GP Learning Disability Register
- Annual Health Checks
- Reasonable Adjustments
- Hospital Passports