

Meet the Provider Event

Play & Leisure Activities in Enfield

24th January 2022

www.enfield.gov.uk

Striving for excellence



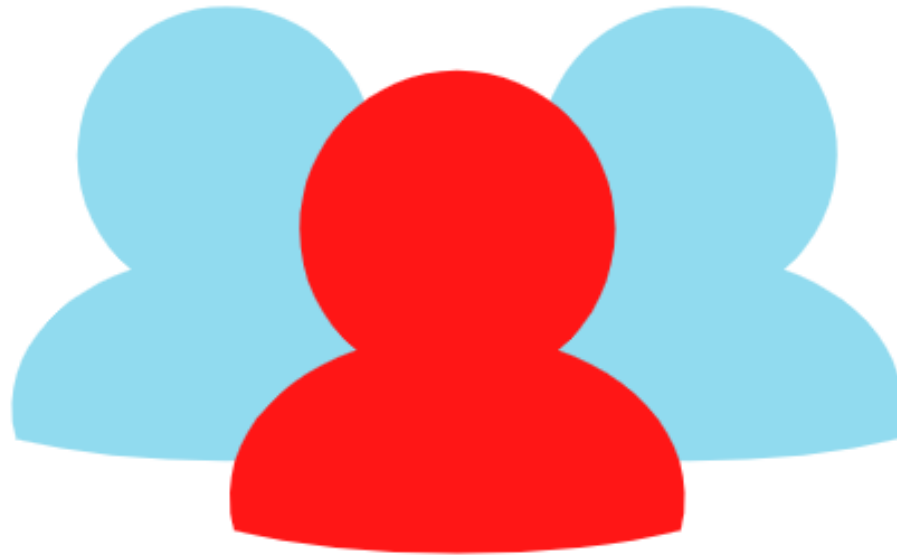
Background

Play and Leisure Survey conducted in March 2021

**Understand what
activities are
currently being
accessed**

**Understand what
activities children
and young people
want in the future**

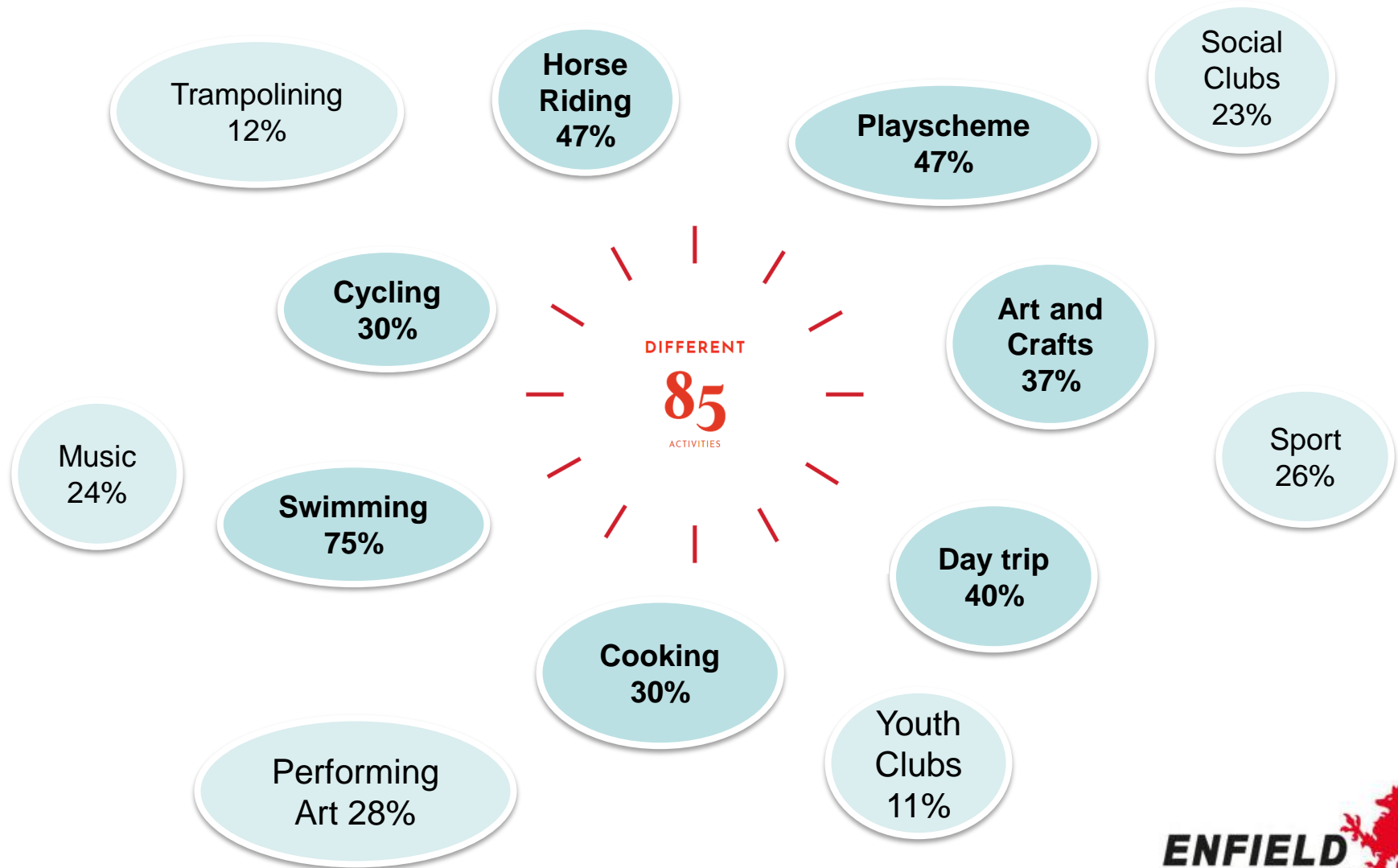
The Questionnaire - responses



**337
responses**

**10% of the
SEND
population**

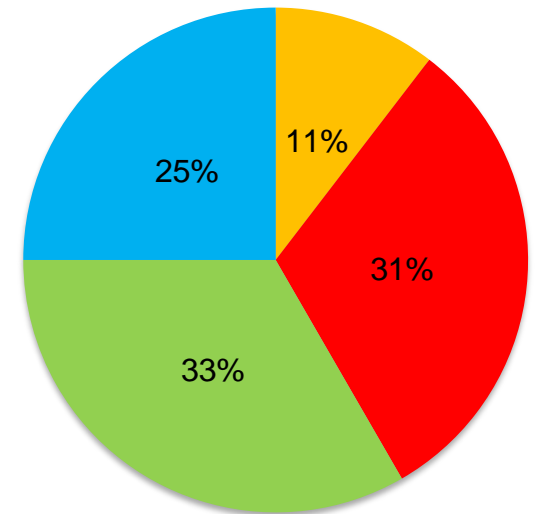
Future Activities



Communication



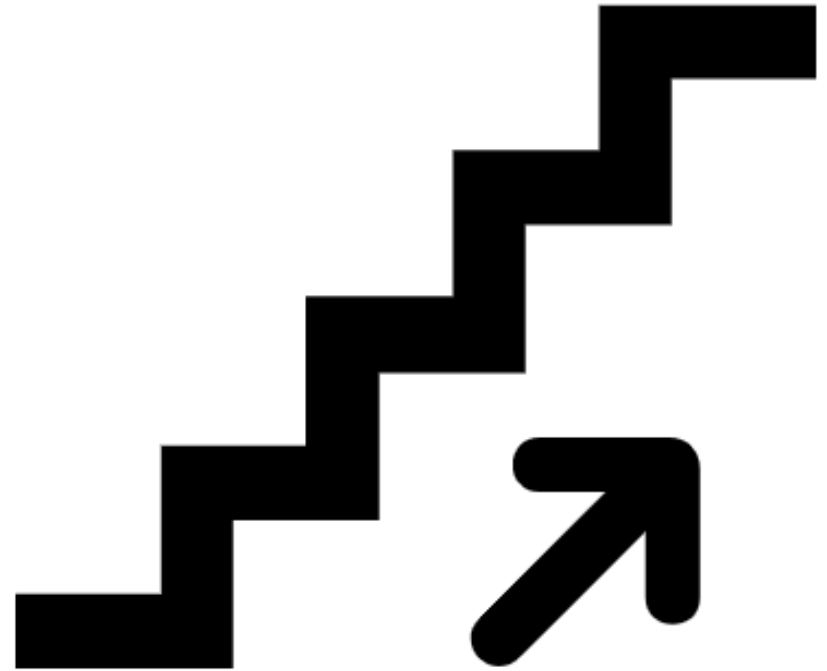
Children's Questionnaire



■ evening ■ weekend
■ school holidays ■ after school

Developments so far

- What have we done as a result of the survey



New Activity – Climbing Wall Course

- SEND specific May half term delivered in partnership with the Youth Service
- 12 spaces – 9 signed up
- Regular inclusive Saturday sessions, 5 spaces, 12pm -1pm and 1pm – 2pm

My son has especially grown in confidence each week which has been amazing to see especially as he is usually scared of heights. The instructors are excellent, very patient and helpful with all the kids

A lot of work had been put into this...you could tell...and they were very understanding kind and patient with our young people

Would definitely go again and recommend. A great bunch of people and a lovely youth centre

BOOK YOUR FREE SPACE
IT'S BACK!!

THE CLIMBING WALL
@ CRAIG PARK YOUTH CENTRE
IS RE-OPENING TO YOUNG PEOPLE IN APRIL 2021

ARE YOU LOOKING FOR A NEW CHALLENGE?
Our indoor climbing wall is a fun-filled, adrenaline pumping activity with many benefits. So why not learn a new skill and challenge yourself to new heights, with a guaranteed sense of achievement as you scale up the wall.

GET READY TO CHALLENGE YOURSELF TO GREATER HEIGHTS!

THERE ARE LOTS OF BENEFITS TO CLIMBING SUCH AS:

- REDUCES STRESS**
- INCREASES FITNESS**
- INCREASES FLEXIBILITY**
- DEVELOPS TEAMWORK AND FRIENDSHIPS**
- BUILDS MENTAL STRENGTH**
- CONQUERS FEARS AND BUILDS RESILIENCE**

AVAILABLE TO ALL YOUNG PEOPLE AGED 11-19 AT ALL LEVELS AND ABILITIES.
Email: youthenfield@enfield.gov.uk for more information.
Climbing wall sessions available from the 17th April 2021.
Book: Your Free Space now via the Youth Bubble website:
www.youthenfield.taptab.co.uk

Inspiring YOUNG ENFIELD
Youth Enfield



www.enfield.gov.uk/youth



New Activity - Cycling

- JSDC worked in partnership with Healthy Streets and Bike Works to set up and run a cycling club during the summer of 2021 and October half term
- The club was free to families, as it was fully funded by the JSDC.
- 40 children and young people were able to cycle
- 60% of parents said they would be willing to pay a contribution of £10 for the activity to continue

'Brilliant! (with a thumbs up from daughter). Really enjoyed it and looking forward to coming again. Great venue. Hoping to get a Tomcat for my daughter like the one she rode today.'



Loved the service. Great bike activity – would love to see more. I didn't know what bike might suit my daughter and now I do. Great way to interact with other children'.

2 New Playscheme Providers



SEND Youth Club

- 17 places available
- Currently approx. 5 – 7 young people attending regularly

The very 1st week when she attended the club, she was very adamant that she didn't want to go anywhere/leave the house, etc, and now, she can't wait for Tuesday to come early enough and is fully co-operative beforehand every Tuesday just so she can go to the club

We are opening...



A SEND Youth Club for young people at our Bell Lane Youth Centre



Healthy relationship workshops



Personal safety



Support to develop life skills



Sports sessions

We welcome children and young people with a wide range of differences and we typically have a staff to young person ratio of 1:5

BELL LANE YOUTH CENTRE, ENS 6PA

STARTING TUESDAY 23 NOVEMBER
6.30pm - 8.30pm

Sign up online today
to register your interest please see website below
www.youthenfield.taptub.co.uk


ENFIELD
Council 

SEND Youth Club – what the young people say

Talking with friends and helping with the cooking

I like meeting new people and making friends

The youth club gets me out of the house and doing stuff"

I enjoy seeing my friends and playing

I enjoy youth club for the social interaction and seeing my friends

Summer University

- Inclusive opportunities
- Some SEND specific activities
- Over 70 YP with SEND accessed activities during Summer 2021

SEND Holiday Activities Booklet



October Half Term Activities for
Children and Young People with SEND
25th – 29th October 2021

www.enfield.gov.uk



ENFIELD
Council



Summer Holiday Activities for
Children and Young People with SEND
July – August 2021

www.enfield.gov.uk

ENFIELD
Council



Christmas Holiday Activities for
Children and Young People with SEND
20th December – 4th January

The number of holiday playschemes that run over the Christmas period are reduced.
It is advisable to book early to avoid disappointment.

www.enfield.gov.uk

ENFIELD
Council

Swimming

- Overall, 75% surveyed wanted to access swimming
- Formont Pool available to hire
- SEND Swimming Survey
- Zebras Swimming for autistic children & young people
- Working in partnership with Fusion Leisure
- On-line survey – please complete



Enfield's Local Offer for SEND

[How should educational settings support children with SEND?](#)

[Where to get support](#)

[Things to do in Enfield](#)

Enfield's Local Offer provides help and support to children and young people with Special Educational Needs and Disabilities (SEND), and their families. We offer a wide range of services for parents and carers, as well as young people who want to live as independently as possible. You can follow our [Twitter page](#) for updates on SEND events, or [provide feedback on our services](#).

SEND spotlights

If you wish to advertise your event or activity on the spotlight, email cheviots@enfield.gov.uk.



Salmon's Brook School

A newly built special school opening September

Our Voice



Meet the holiday playscheme providers



West Lea School supported internship open day

LIVE
CHAT





Holiday playschemes and 'short breaks': meet the providers

Monday 24th January from 7 – 9 pm (online)



This online session, organised by Our Voice Parent/Carer Forum and the LBE Local Authority, is for all parents and carers of children and young people (0-25) with special needs and/or disabilities living in Enfield.

This online session will give parents and carers an opportunity to find out about some of the holiday playschemes and activities available for children with SEND (whether or not they receive 'short breaks' funding). The Local Authority will update us, and we will hear directly from some of the key providers about what they offer during the school holidays.

7pm	Welcome, Introduction and Background
7.15pm	Chickenshed Theatre
7.30pm	Centre 404
7.45pm	Endorphins
8pm	ALWA
8.15pm	Walker Children's Club
8.30pm	Brighter Light Support
8.45pm	Closing remarks

The meeting will take place online via Microsoft teams. The event is free but you must pre-book at

<https://holidayplayschemesandshortbreaks.eventbrite.co.uk>

