



Holiday Play and Leisure Activities for Children and Young People with SEND

Spring and Summer 2024



This booklet is designed to provide parents/carers with information about play and leisure activities that are available for children and young people with SEND.

The information in this booklet is not exhaustive, and inclusion in this booklet does not mean that the Joint Service for Disabled Children endorses the activities.

It is split into three sections:

1. Universal Activities

These are inclusive activities that intended to be accessible to all children and young people. You should talk directly with the provider to find out whether they can meet the needs of your child. You need to book and pay for these activities yourself. If you are in receipt of a Short Breaks Grant you can use this funding to pay for the activities.

2. Universal Plus Activities

These are activities for children and young people with SEND who need some additional support. You need to book and pay for these activities yourself. If you are in receipt of a Short Breaks Grant you can use this funding to pay for the activities.

3. Specialist Activities

These activities are for children and young people with SEND, who have complex needs. You may be referred to the activity and it will form part of your package of care. You can however, buy additional days directly from the provider, as can parents/carers who do not receive a care package.

Don't forget you can find this booklet and more information about activities and things to do in Enfield on the [Local Offer](#).

Universal Activities

The following provides an overview of some Universal activities. See websites for more information. Please talk directly with the provider to find out whether they can meet the needs of your child.

TIMES	PROVIDER	ACTIVITIES	OFSTED	AGE	COST & CONTACT
Various	Chickenshed 290 Chase Side London N14 4PE	Chickenshed is based on a belief that everyone can flourish when everyone is included. They provide support to those who need it. They run a variety of workshops, inclusive theatre and events during the school holidays. Please visit the website for more information and to see what events are on.		0 – 18 depending on activity	COST: Depends on activity. See website for more info. CONTACT: https://www.chickenshed.org.uk/Event/autumn-days Email: info@chickenshed.org.uk
8am – 6pm	Funny Feet Holiday Club Galliard Primary School Galliard Road London N9 7PE	Funny Feet offers an inclusive environment where children feel free to be themselves and socialise with children of various ages and culture. The children participate in fun activities and have access to a multitude of play opportunities. We also arrange outings to cinemas, parks, seashores, adventure playgrounds and other interesting and fun places.	Yes	4 – 12	COST: Contact provider for cost CONTACT: https://www.funny-feet.co.uk/ Tel: 07521162527
9am – 11.45am 9am – 3pm 9am – 5pm	Kalo Sport Hazelwood Sports Club Ridge Avenue Winchmore Hill London N21 2AJ	Indoor and outdoor sports facilities including Tennis, football, multi-sport. A clubhouse where children can watch age appropriate cartoons and older children can use wi-fi during breaks and at lunch	Yes	4 - 16	COST: £25 per half day £40 per full day (9am – 3pm) £50 per full day (9am – 5pm) CONTACT: https://www.kalosport.com/hazelwood-sports-camp/ Tel: 020 8360 4273 Email: info@kalosport.com

TIMES	PROVIDER	ACTIVITIES	OFSTED	AGE	COST & CONTACT
8am – 6pm	Sticky Fingers St George's CoE Primary School Hertford Road Enfield EN3 6NR	We provide holiday play schemes for children 4 to 12 years of age. There is a multitude of activities and trips for the children to get involved in, such as outings to the fair, bowling, cinema, theatres, picnics, swimming, museums, farms, ice-skating, fun houses etc.	Yes	4 - 12	COST: £20 per day CONTACT: https://stickyfingersenfield.co.uk/ Email: sheniz@stickyfingersenfield.co.uk Tel: 07732385075
8.00am – 6.15pm	Walker Children's Club Walker Hall The Green Waterfall Road Southgate N14 7EG	An inclusive holiday play scheme which offers a wide variety of entertaining activities, games, crafts and sport to meet all ages and all needs. Quieter chill out zones to relax and read. There's always someone on hand to help.	Yes		COST: £26 per day £24 per day sibling discount CONTACT: https://walkerchildrensclub.com/book-online-2 07961 485646 020 8920 9500 www.walkerchildrensclub.com
9am – 5pm	Time for Change Holiday Club 149 Firs Lane London N21 3ER	Holiday club runs every school holiday and includes the following activities: <ul style="list-style-type: none"> • Slime making • Tag rugby • Boxercise kids • Zumba/Bokwa • Arts and Crafts • Dodgeball • Gymnastics • Dance • Cooking • Trips to the park 			COST: £26 per day £6 early £6 late 30% sibling discount CONTACT: holidayclub@annmarietimeforchange.com

HAF Enfield Easter 2024

2nd – 12th
April



Reception
to Year 11

FREE* places available in
Enfield's Holiday Activities
and Food (HAF) programme
this Easter. For more
information visit **Holiday
activities and food
programme | Enfield
Council**

*Free for those in receipt of benefits
related free school meals

Arts &
Crafts

Get
Active

Free
nutritious
meals

Cooking

Day
Trips

Plus
much
much
more!

www.enfield.gov.uk/services/children-and-education/holiday-activity-and-food-programmes#haf-programme

Funded by



Department
for Education

ENFIELD
Council 



Universal Plus Activities

SEND Easter Cycling Fun

Firs Farm Wetlands Park
and Playing Fields
Firs Lane, Enfield N21 2PJ

Tuesday 2nd April 2024
Tuesday 9th April 2024

10am – 11am
11am – 12noon
12noon – 1pm
1pm – 2pm
(8 – 25 years)

There will be
a variety of
accessible bikes for
children and young
people to try out
and improve their
cycling skills.

There is a community
hub café where families
can buy refreshments
and fully accessible toilet
facilities with a hoist and
changing bed. Why not
make a day of it and enjoy
the Wetlands.



To book your place please email bike@enfield.gov.uk with your child or young person's name, age, school/college, and the date and time they would like to attend.

www.enfield.gov.uk

Inclusive swimming and gym sessions are available at Southbury Leisure Centre.



Inclusive Swimming Session

Each Sunday 15:00-16:00pm we offer an inclusive swimming session which allows young people and adults with additional needs and disabilities to use the pool, benefitting from reduced capacity and noise.

Sessions start at just £3.60 per swimmer or free as part of a Better HF membership.



Inclusive Gym Session

Our inclusive gym sessions are ideal for adults and young people to exercise together and get the support needed from one of our dedicated fitness instructors, getting healthy and having fun.

Sessions start at just £3.60 per person or free as part of a Better HF membership.

Come and join us...



SEND Youth Centre



Healthy
relationship
workshops



Personal
safety



Support to develop
life skills



Sports
sessions

We welcome children and young people with a wide range of differences
and we typically have a staff to young person ratio of 1:5

BELL LANE YOUTH CENTRE, EN3 5PA

EVERY TUESDAY

6.30pm - 8.30pm

Sign up online today

to register your interest please see website below

www.youthenfield.taptub.co.uk





Contact name	Faye Makhoulouf
Telephone number	0203 375 9045
Email address	faye@endorphins.uk
Website address	www.endorphins.uk
Usual Venue	Eastfield Primary School Eastfield Road Enfield EN3 5UX
Type of activity provided	<ul style="list-style-type: none"> • Our inclusive holiday spectacular sessions will provide a safe and supportive environment for SEND children and young people. • Whether it's arts and crafts, drama, dance or inclusive activities – then our Superstar sessions are the place to be in Enfield over the holidays. • Our experienced team is focused on delivering sessions that promote fun and friendships. • Sessions are pre-bookable only so we can ensure we can provide an excellent level of care with a staff ratio of 1:3.
Support available for children and young people with SEND, eg, hearing impairment, visual impairment, wheelchair accessibility, personal care	Our 1:3 staff to participant ratio ensures we can support a wide range of disabilities and additional needs in our accessible venues.
Age range	8 – 14 years
Staffing ratio	1:3
Ofsted registered	Yes
Cost per session	£60 per day A subsidised rate of £20 per day, for one day only, if not in receipt of any other funding, services or support.
Number of places available	10
Can new referrals be accepted?	Yes
Any other relevant information	



Spring and Summer Playschemes

Please refer to the website
<http://www.endorphins.uk>
or contact the provider for dates

Faye Makhlouf
Tel: 020 3375 9045
Email: faye@endorphins.uk



Specialist Activities



ALWA Specialist Play Scheme

Contact name	Tee Richards
Telephone number	07306 403908
Email address	info@abundantlivingwithautism.org.uk
Website address	www.abundantlivingwithautism.org.uk
Usual Venue	Russet House School 11 Autumn Close Enfield EN1 4JA
Type of activity provided	<ul style="list-style-type: none">• Bouncy Castle• Ride on car• Outdoor Play• Trampoline• Soft Play Room• Arts and Crafts• Cooking• Sensory/Water/Messy Play
Support available for children and young people with SEND, eg, hearing impairment, visual impairment, wheelchair accessibility, personal care	For Autistic Children
Age range	5 to 13 years
Staffing ratio	Typically, 1 staff member to 3 children Additional staffing assessed on numbers in session, the needs and behaviours of children attending and if one to one support is required
Ofsted registered	Yes
Is personal care provided?	Yes
Cost per session	£75 per day £37.50 for half day £95 per day for one to one support
Number of places available	24
Can new referrals be accepted?	Yes
Any other relevant information	



ALWA Specialist Play Scheme

Spring and Summer Playschemes

EASTER HOLIDAYS		
Date	Time	Venue
Tuesday 2nd April 2024	10am – 3pm	Russet House School 11 Autumn Close Enfield EN1 4JA
Wednesday 3rd April 2024	10am – 3pm	As above
Monday 8th April 2024	10am – 3pm	As above
Tuesday 9th April 2024	10am – 3pm	As above
Wednesday 10th April 2024		
MAY HALF TERM		
Tuesday 28th May 2024	10am – 3pm	As above
Wednesday 29th May 2024	10am – 3pm	As above





Telephone number	07599609083
Email address	Info@BrighterLightSupport.co.uk
Website address	www.brighterlightsupport.co.uk
Usual Venue	Durants School Pitfield Way Enfield EN3 5BY
Type of activity provided	<ul style="list-style-type: none"> • Spacious and airy classrooms • Sporting equipment • Outdoor play/garden • Indoor play areas • Safe spaces and calming regulatory areas • Trampoline • Soft Play • Arts and Crafts • Cooking • Sensory/Water/Messy Play • Interactive technological play
Support available for children and young people with SEND, eg, hearing impairment, visual impairment, wheelchair accessibility, personal care	Support is available for SEND but no wheelchair access. Personal care is provided dependent on level of need. (can be discussed prior to booking)
Age range	11 – 17 years
Staffing ratio	1:4 depending on need 1:1 is available but must be discussed
Ofsted registered	No
Is personal care provided?	Yes – must be discussed prior to attendance
Cost per session	£60 per full day 10am - 3pm, £30 per half day 12.30 - 3pm £80 per day for 1:1 support
Number of places available	20 places per day
Can new referrals be accepted?	Yes
Any other relevant information	



Spring and Summer Playschemes

Please refer to the website
<https://www.brighterlightsupport.co.uk>
or contact the provider for dates

Tel: 07599609083
Email: info@brighterlightsupport.co.uk

Contact name	Tracy Hammond
Telephone number	0207 607 8762 07932 576 977
Email address	TracyH@centre404.org.uk
Venue address	Rose Taylor Centre 55B The Sunny Road Forty Hill EN3 5EF
Type of activity provided	<ul style="list-style-type: none"> • Multisport • Day Trips • Creative Play
Support available for children and young people with SEND, eg, hearing impairment, visual impairment, wheelchair accessibility, personal care	1:1 support available Personal Care, Positive Behavioural Support, Wheelchair Accessible, staff trained and experienced working with CYP with Learning Disabilities and Autism.
Age range	8 – 17 years
Staffing ratio	1:1 or 1:3 support
Ofsted registered	No
Cost per session	Free for children receiving free school meals: please book online with your e-voucher. £110 per day £125 per day with 1:1 support
Can new referrals be accepted?	Yes
Any other relevant information	Centre 404 provides support to children and young people with Learning Disabilities and Autism. We have worked with children and young people for several decades. Our aim is to provide fun, creative, and person-centred activities that promote socialisation and communication, healthy eating and well-being, enhance life-skills, and independence.

Easter Holidays Playscheme

Date	Time	Venue
Tuesday 2nd April 2024	10am – 2pm	Rose Taylor Centre 55B the Sunny Road Forty Hill Enfield EN3 5EF
Wednesday 3rd April 2024	10am – 2pm	As above
Thursday 4th April 2024	10am – 2pm	As above
Friday 5th April 2024	10am – 2pm	As above



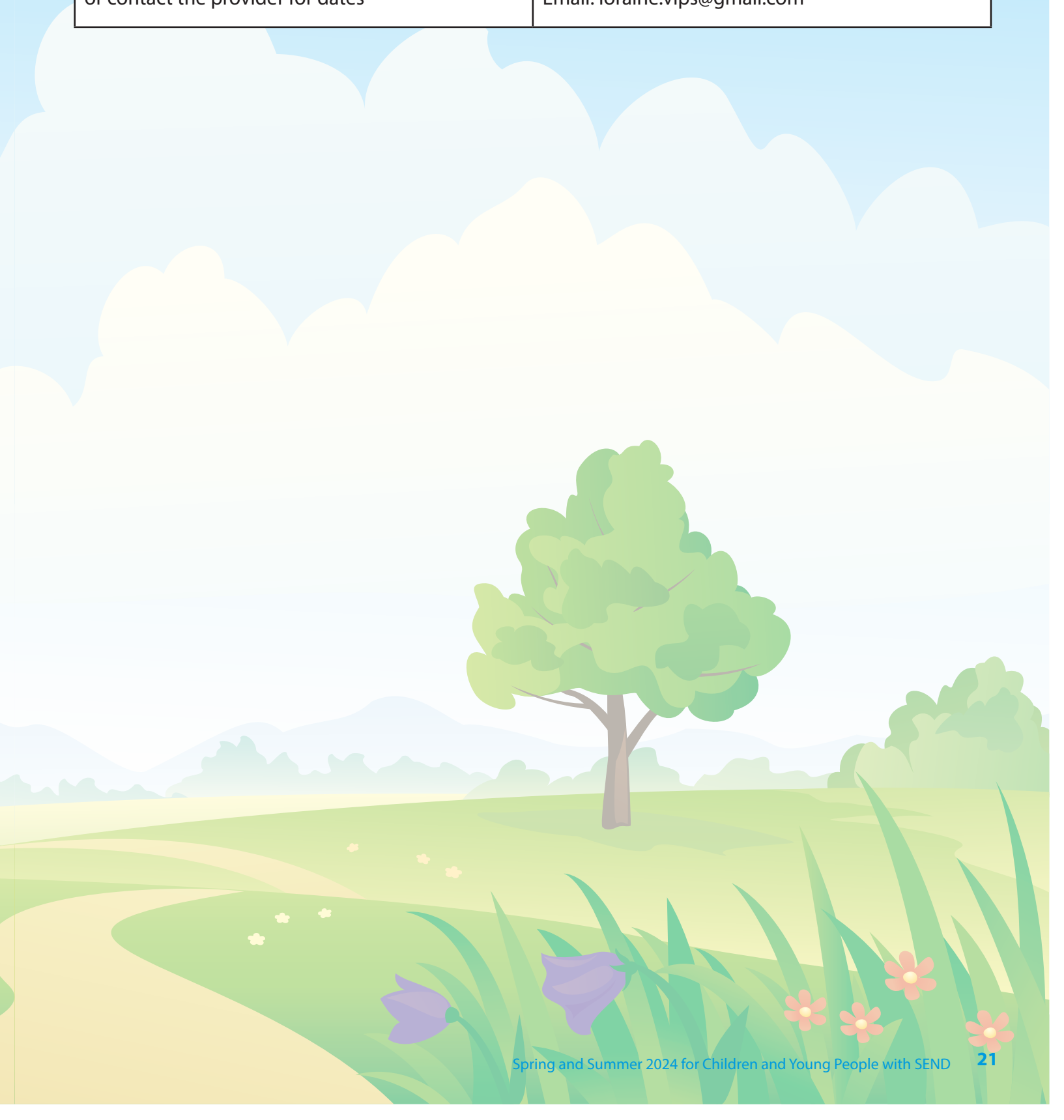
Contact name	Lorraine Stock
Telephone number	07810 485126
Email address	Lorraine.vips@gmail.com
Website address	https://veryimportantpeopleservices.co.uk/
Usual Venue	Community of Christ Church 49 Lancaster Road Enfield EN2 0BD
Type of activity provided	<ul style="list-style-type: none"> • Arts and crafts • cooking • puzzles, board games • karaoke, • park [depending on the weather], • small play, sensory play, Lego, Duplo, • DVDs, iPads, Playstation • socializing, bowling etc. <p>We try to meet needs of the young people booked on at this time, so it's very helpful if parents can provide information for us about their young person's favourite activities.</p>
Support available for children and young people with SEND, eg, hearing impairment, visual impairment, wheelchair accessibility, personal care	Yes
Age range	8+
Staffing ratio	Depends on need
Ofsted registered	n/a
Is personal care provided?	Yes
Cost per session	£55.00 £67.50 with transport £80.00 with transport and 1:1
Number of places available	Dependent on support and dates required
Can new referrals be accepted	No
Any other relevant information	



Spring and Summer Playschemes

Please refer to the website
<https://veryimportantpeopleservices.co.uk>
or contact the provider for dates

Loraine Stock
Tel: 07810 485126
Email: loraine.vips@gmail.com



Contact name	Lee Bagley
Telephone number	07951 521848
Email address	lbagley@westleaschool.co.uk
Website address	www.westleaschool.co.uk
Usual Venue	Haselbury Campus Haselbury Road Edmonton N9 9TU
Type of activity provided	Multicultural cooking model building free time painting indoor games book corner Lego film club sports. Outing's bowling, riding bikes in Bush Hill Park Crazy golf and day out to Cyder park/picnic
Support available for children and young people with SEND, eg, hearing impairment, visual impairment, wheelchair accessibility, personal care	Autism visual impaired Wheelchair accessibility Epilepsy
Age range	8 - 18 years
Staffing ratio	3 students –1 member of staff
Ofsted registered	Yes school is
Is personal care provided?	Yes
Cost per session	£38.00 per session
Number of places available	30
Can new referrals be accepted	No
Any other relevant information	

Spring and Summer Playschemes

EASTER HOLIDAYS		
Date	Time	Venue
Thursday 4th April 2024	10am – 3pm	Hazelbury Campus Hazelbury Road Edmonton N9 9BY
Friday 5th April 2024	10am – 3pm	As above
Thursday 11th April 2024	10am – 3pm	As above
Friday 12th April 2024	10am – 3pm	As above
MAY HALF TERM		
Thursday 30th May 2024	10am – 3pm	As above
Friday 31st May 2024	10am – 3pm	As above

